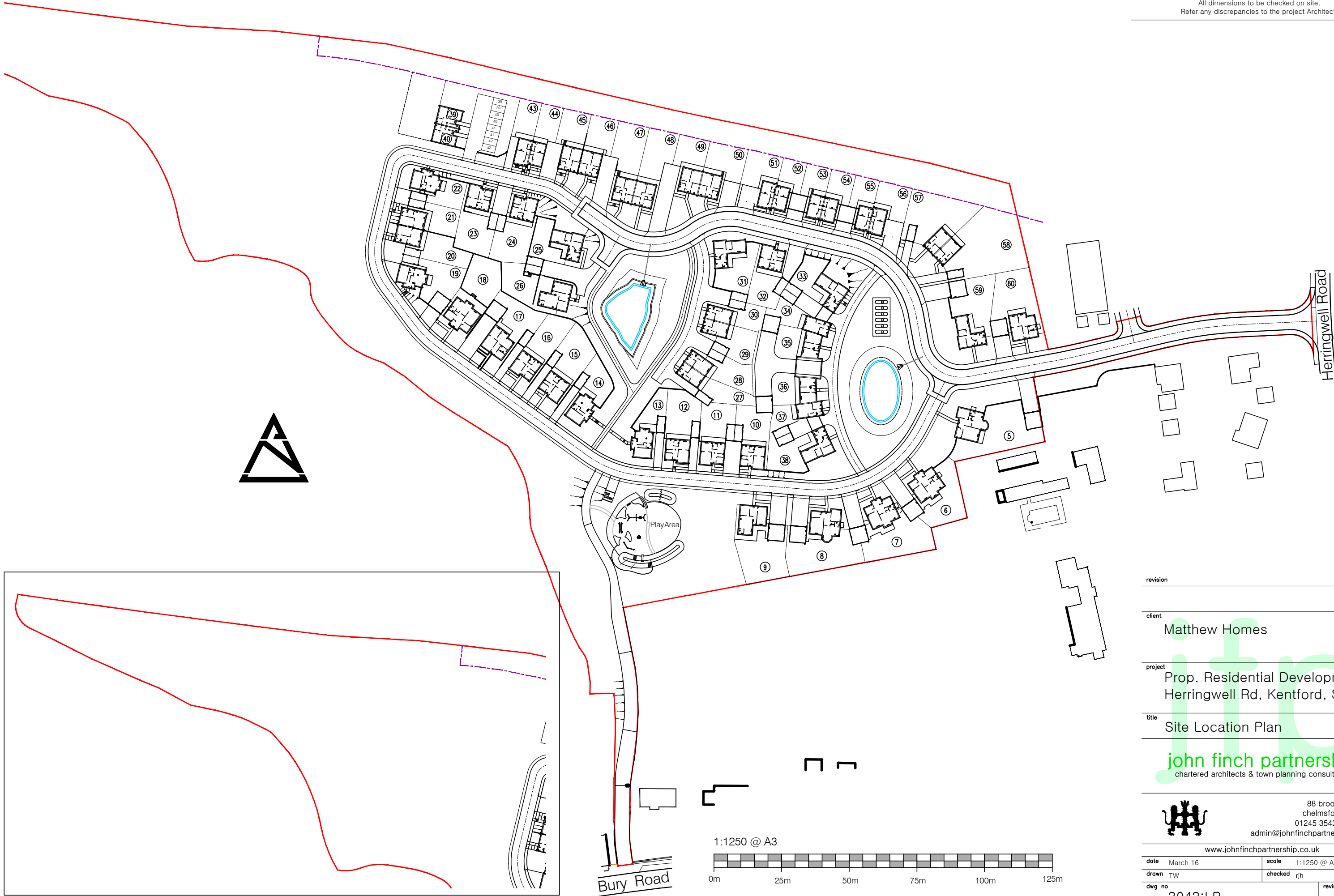


This drawing is copyright © and must not be reproduced in whole or part without obtaining written authority from John Finch Partnership.  
Do not scale from this drawing.  
All dimensions to be checked on site.  
Refer any discrepancies to the project Architect.



revision

client  
Matthew Homes

project  
Prop. Residential Development  
Herringwell Rd, Kentford, Suffolk

title  
Site Location Plan

**john finch partnership**  
chartered architects & town planning consultants



88 broomfield road  
chelmsford cm1 1ss  
01245 354319/250780  
admin@johnfinchpartnership.co.uk

www.johnfinchpartnership.co.uk

date	March 16	scale	1:1250 @ A3
drawn	TW	checked	rjh
dwg no	3042:LP	revision	